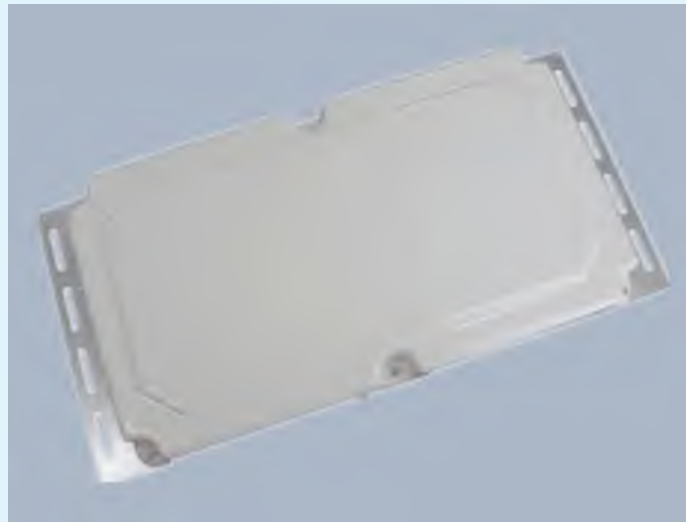


## AI-RF-FX-AN700 RFID Narrow Beam Antenna



### Features

- Low profile with high gain, reading distance range up to 20m
- Maximum efficiency and performance across the entire frequency band
- Seamlessly compatible with different brand RFID readers
- Widely used in ITS / ETC, refrigerator, smart shelf, access control, retail shop, file cabinet etc.

### Specifications

#### Physical / Environmental Specifications

|                            |                           |
|----------------------------|---------------------------|
| Dimensions (L x W x D)     | 460 mm×220mm×35 mm        |
| Weight                     | 4.3KG                     |
| Radome Material            | Aluminum +ABS             |
| Sealing                    | IP66                      |
| Connector type / position: | SMA- male or Customizable |
| Mounting                   | Flush                     |
| Operating Temperature      | -40 - +85°C               |
| Storage Temperature        | -40 - +85°C               |

### Electrical Specifications

|                     |                      |
|---------------------|----------------------|
| Frequency Range     | 860MHz ~ 960MHz      |
| Polarization        | Narrow Beam Circular |
| Far-Field Gain      | 10 dBi               |
| Typical VSWR        | VSWR $\leq$ 1.3      |
| Nominal Impedance   | 50 ( $\Omega$ )      |
| Maximum Input Power | 10W                  |

## Radiation Pattern

