

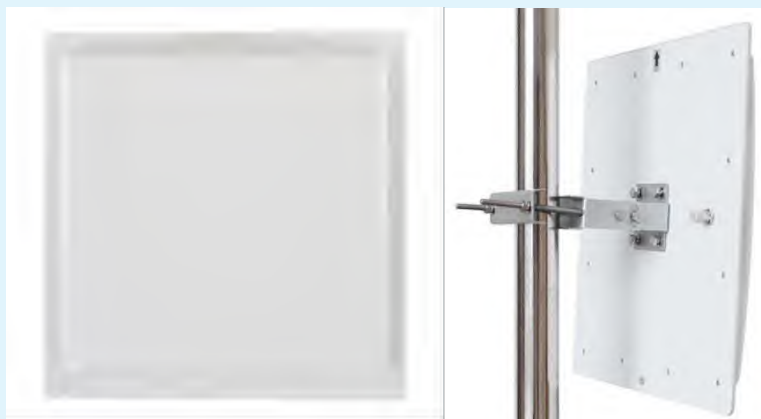
AI-RF-FX-AN500

12dBi Long Range RFID Antenna



Features

- Low profile with high gain, reading distance range up to 20m
- Maximum efficiency and performance across the entire frequency band
- Seamlessly compatible with different brand RFID readers
- Widely used for long reading distance application such as warehousing, logistic, production, yard etc.



Specifications

Physical / Environmental Specifications

| | |
|----------------------------|----------------------------|
| Dimensions (L x W x D) | 445mm×445mm×40mm |
| Weight | 1.95Kgs |
| Radome Material | Aluminum +ABS |
| Sealing | IP66 |
| Connector type / position: | TNC female or Customizable |
| Mounting | Bracket |
| Operating Temperature | -40- +70°C |
| Storage Temperature | -40- +70°C |

Electrical Specifications

| | |
|----------------------|-----------------|
| Frequency Range | 860MHz ~ 960MHz |
| Polarization | Circular |
| Far-Field Gain | 12 dBi |
| H side Beamwidth | 45° |
| E side Beamwidth | 45° |
| Typical VSWR | VSWR≤1.3 |
| Nominal Impedance | 50 (Ω) |
| Maximum Input Power | 100W |
| Lightning Protection | DC to ground |